

WHAT'S NEXT FOR THE PURFLEET-ON-THAMES REGENERATION PROJECT?



Purfleet Centre Regeneration Limited (PCRL) wants you to have your say as we continue to develop the £1bn regeneration project that will see thousands of new homes, a new town centre and a media and creative industries hub established in Purfleet-on-Thames.

PCRL - a joint venture between mixed-use developer Urban Catalyst and Swan Housing Association - is driving the regeneration of Purfleet-on-Thames town centre in collaboration with Thurrock Council.

We can't currently hold a public gathering due to Government Coronavirus (COVID-19) public health guidance. You can read more about how we are continuing to work safely within these guidelines to progress the project on our website: OurPurfleet.com

We would therefore like to invite you to our virtual Community Consultation Event to find out the latest plans, visions

and timelines for the project on Tuesday 23 June 5.30pm - 7.00pm.

JOIN ONLINE AT:
www.bit.ly/OurPurfleet

During the event, you will be able to watch a live presentation from PCRL, with guest speakers including AHMM (the architects working on the project) and Kinetika (who are helping on the creative side of the scheme and have an exciting announcement to make). At the end of the presentation, there will be an opportunity to submit questions to the PCRL team.

All information will be published on OurPurfleet.com after the event and you will be able to share your feedback using our online form.

We can also provide the information via offline or alternative formats on request.

Contact Garrett on:
✉ garrett@ourpurfleet.com
or call him on 0752 725 1627.

GET INVOLVED

Together with the Purfleet-on-Thames Community Forum, we established the Community Design Panel in early 2016, to provide a link between PCRL and the local community.

Chaired by John Rowles, the Design Panel works collectively with PCRL to identify locally important issues, contribute local knowledge and provide a forum to test emerging plans. We are now looking to expand the Community Design Panel and ensure local voices are heard.

If you would like to get involved contact Garrett on:

✉ garrett@ourpurfleet.com
or call him on 0752 725 1627.

COMPETITION TO WIN A LAPTOP: THERE'S NO PLACE LIKE PURFLEET-ON-THAMES!

Find out how to enter our competition for under 18s on page two»



» Story continued from page one



We're running a competition for under 18s who live in Purfleet-on-Thames.

We want to see your drawings, poems, stories, photos or videos of what Purfleet-on-Thames means to you. It might be a comic featuring friends at the youth club,

a poem about a walk through the town or a photo of your favourite spot. Whatever it is, we want to see it.

To enter the competition email your entry along with a brief explanation, your name, date of birth and address to [✉ garrett@OurPurfleet.com](mailto:garrett@OurPurfleet.com), call Garrett on **0752 725 1627** or tag us on Facebook, Instagram or Twitter [@OurPurfleet](https://www.facebook.com/OurPurfleet).

There will be two brand new laptops up for grabs, one for entrants aged 5-12 and one for those aged 13-18 years old.

The competition closes at 5pm on Friday 17 July 2020. Terms and conditions apply, and can be viewed at [OurPurfleet.com](https://www.ourpurfleet.com)

Two competition winners will be chosen anonymously by our judging panel: PCRL Chairman, Sir Tim Laurence and Chief Officer and Co-founder of St Stephen's Trust, Tracey Luck. The winners to be announced on our website [OurPurfleet.com](https://www.ourpurfleet.com) and our social media channels [@OurPurfleet](https://www.facebook.com/OurPurfleet) on Friday 24 July.

NEW IMAGES OF £1BN PURFLEET-ON-THAMES REGENERATION REVEALED



PCRL is excited to share with you new images that have been released showing how the £1bn regeneration of Purfleet-on-Thames will transform the town centre and riverfront, with upgraded transport links sitting alongside new homes, social infrastructure and a 1 million sq. ft. creative complex.

The illustrations have been created by award-winning architects AHMM, who are working with architects drMM on the overall masterplan, that was originally put together by KSS and aLL Design.

The new images show possible plans for the new train station,

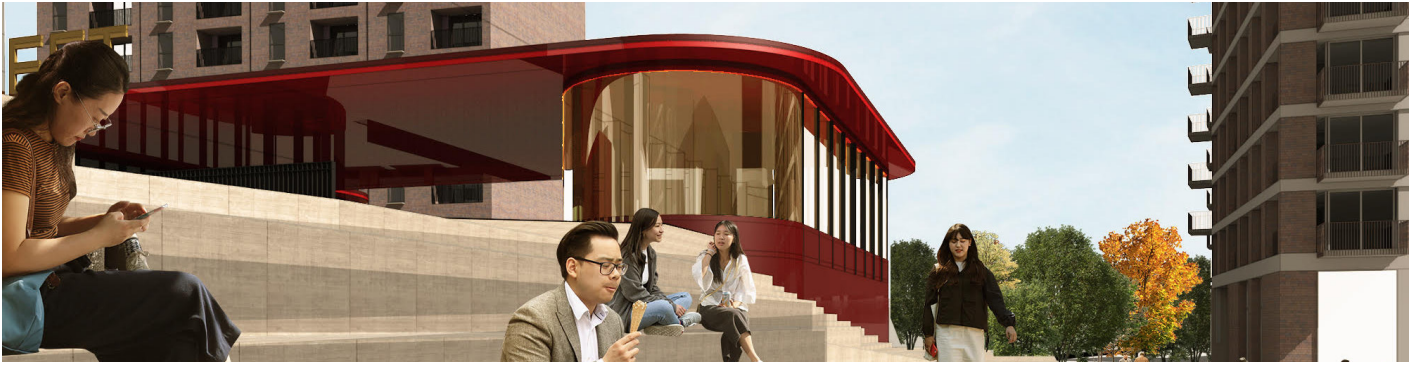
which will be overhauled as part of the regeneration, and the entrances to the new 1,000,000 sq. ft. media village, which will include TV studios where live shows can be filmed in front of a public audience. Other images released also show some of the thousands of homes that will be built.

Once completed, the £1bn regeneration will deliver a new town centre complete with shops and restaurants. Up to 2,850 new homes will be provided as well, alongside an integrated medical centre, improved transport infrastructure and a new primary school.

This will help Purfleet-on-Thames on its journey to becoming a leading creative hub, with the town already home to High House Production Park and the Royal Opera House production workshop.

Later phases could include the delivery of a new Higher Education/Further Education campus, creating a groundbreaking education facility with a focus on key sectors, such as the creative arts and health or logistics.

Find out more about the scheme at: [OurPurfleet.com](https://www.ourpurfleet.com)



OTHER NEWS...

CALLING ALL CREATIVE COMMUNITY GROUPS



We are delighted to be supporting the popular Kinetika T100 Walking Festival which is hosting a special event to celebrate the creative community in Purfleet-on-Thames on 27 September.

Kinetika is inviting 25 local community groups to create a set of hand-painted silk flags that tell their story, to be presented as part of the event which will include a processional walk from Purfleet town centre to High House Production Park.

If you are part of a local group and would like to design and make your own silk flag contact:

✉ Katie@kinetika.co.uk

Flag design and silk painting workshops will take place in July and August.

Provisions are being made to run workshops and the event according to Coronavirus (COVID-19) Government health guidance.

More details: www.thurrock100.com

WE'RE ON SITE!

PCRL is pleased to confirm that it restarted the next phase of site investigation works for the planned regeneration of Purfleet-on-Thames from Tuesday 26 May, marking its commitment to continue progressing the regeneration project that will transform the town centre.

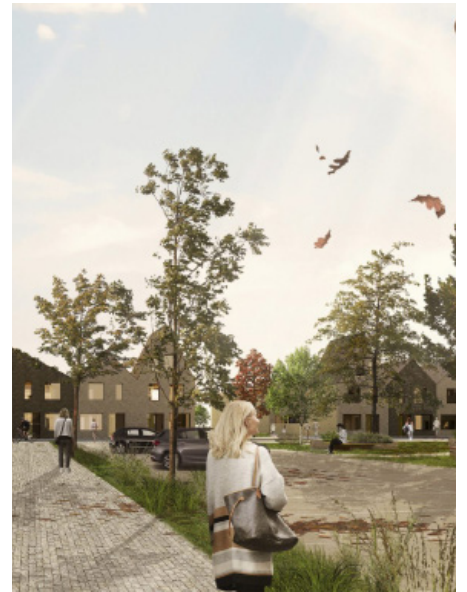
We will be conducting site surveys, including an ecological study, in the area of Harlow Cottage, Church Hollow on various dates from 11 June until 1 July (2020).

Most of the works will take place during normal working hours (8am-6pm), with a small number of observation studies happening at dawn and dusk. All the works will be in line with Coronavirus (COVID-19) safe working practices. There will be limited noise or disruption from the work.

If you have any questions, please get in touch with Andrew Joyce on ajoyce@swan.org.uk or telephone 07719 964161.

61 NEW HOMES FOR PURFLEET-ON-THAMES

We are pleased that site clearance works on the part of the site on which the 61 new two, three and four bedroom family homes, which form Phase 1A of the regeneration of Purfleet-on-Thames will begin in Autumn 2020. The first homes are set to be complete early in 2022.



A regeneration delivered by Purfleet Centre Regeneration Limited in partnership with Thurrock Council. PCRL is a joint venture between Urban Catalyst and Swan Housing Association.



URBAN catalyst

swan nu
living

thurrock.gov.uk

Creating a Purfleet for everyone

Visit: www.OurPurfleet.com to find out more and pledge your support for this regeneration #ourpurfleet